

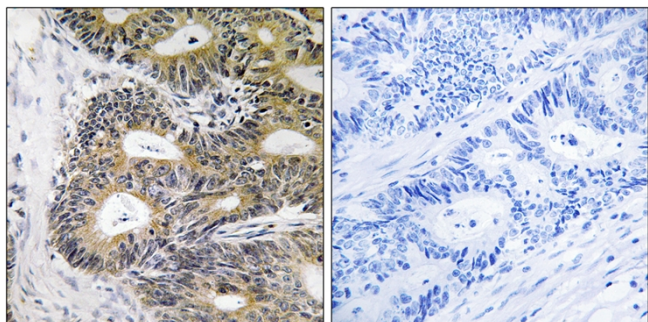


TRAPPC6A Polyclonal Antibody

Catalog No	YP-Ab-00752
Isotype	IgG
Reactivity	Human;Rat;Mouse;
Applications	IHC;IF;ELISA
Gene Name	TRAPPC6A
Protein Name	Trafficking protein particle complex subunit 6A
Immunogen	The antiserum was produced against synthesized peptide derived from human TRAPPC6A. AA range:31-80
Specificity	TRAPPC6A Polyclonal Antibody detects endogenous levels of TRAPPC6A protein.
Formulation	Liquid in PBS containing 50% glycerol, 0.5% BSA and 0.02% sodium azide.
Source	Polyclonal, Rabbit,IgG
Purification	The antibody was affinity-purified from rabbit antiserum by affinity-chromatography using epitope-specific immunogen.
Dilution	IHC: 1/100 - 1/300. ELISA: 1/40000.. IF 1:50-200
Concentration	1 mg/ml
Purity	≥90%
Storage Stability	-20°C/1 year
Synonyms	TRAPPC6A; HSPC289; Trafficking protein particle complex subunit 6A; TRAPP complex subunit 6A
Observed Band	
Cell Pathway	Golgi apparatus, cis-Golgi network . Endoplasmic reticulum .
Tissue Specificity	Lung,Umbilical cord blood,
Function	function:May play a role in vesicular transport during the biogenesis of melanosomes.,similarity:Belongs to the TRAPP small subunits family. BET3 subfamily.,subunit:Part of the multisubunit TRAPP (transport protein particle) complex. Heterodimer with TRAPPC3.,
Background	This gene encodes a component of the trafficking protein particle complex, which tethers transport vesicles to the cis-Golgi membrane. Loss of expression of the related gene in mouse affects coat and eye pigmentation, suggesting that the encoded protein may be involved in melanosome biogenesis. Alternatively spliced transcript variants encoding multiple isoforms have been observed for this gene. [provided by RefSeq, Aug 2012],
matters needing attention	Avoid repeated freezing and thawing!

Usage suggestions

This product can be used in immunological reaction related experiments. For more information, please consult technical personnel.

Products Images

Immunohistochemistry analysis of paraffin-embedded human colon carcinoma, using TRAPPC6A Antibody. The picture on the right is blocked with the synthesized peptide.